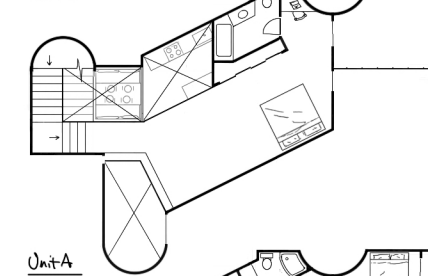


With the era of the big box store coming to an end, I'm proposing a repurposing of the shell for housing and indoor farming. As an existing climate controlled space the big box envelope could provide the advantage of the housing units inside to avoid the costly weather proofing and insulation typically required for all seasons. The housing units I have designed here are intended to be constructed as a kit of parts, namely mass timber. DLT or dowel laminated timber is a suitable raw building material for housing as it does not use formaldehyde glue and can act as a bearing wall and floor plate. Curves are possible perpendicular to the timber orientation. Cladding the exterior with a shousugiban (charred) wood siding on the flat walls contrasting a pale vertical tile on the curved surfaces. By including a number of commercial spaces for businesses typically found in a walkable urban environment, this scheme could provide a mostly interdependent community hidden within the exoskeleton remnants of 20th century consumerism.

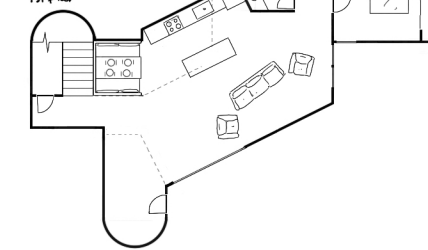
Design by  
*Reggie Mace*  
 3/19/2020

Primary Unit Plan

Unit A  
2nd Floor

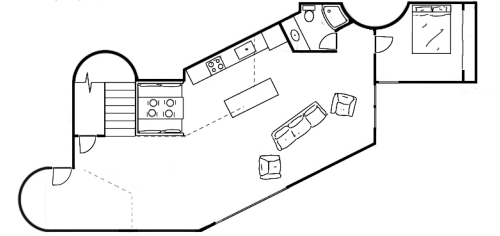


Unit A  
1st Floor

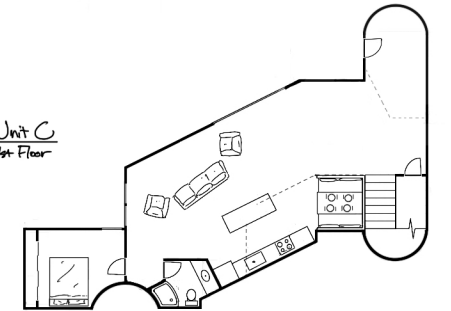


Variations

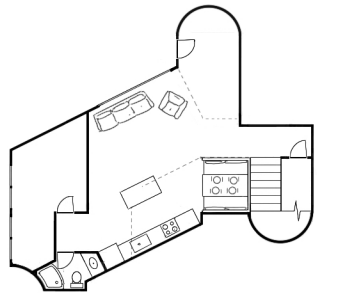
Unit B  
1st Floor



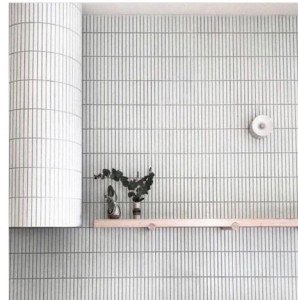
Unit C  
1st Floor



Unit D  
1st Floor



Tile Cladding on curved Exterior - Columns



Dowel Laminated Timber



Shousugiban Cladding on Apt. Exterior



Design Precedent - Cooper Residence - Gunnar Kieser

